



X-SCL

- The copyright laws for the following manual apply to the Manufacturer, which is the company GS Software Grzegorz Stolarski Robert Trawiński General Partnership, Półnanki 80 lok 402, 30-740 Kraków.
- The GS Software company is not responsible for errors in printing or deficiency of the instructions. In addition, the GS Software company does not take responsibility for damages caused through the usage of the program X-Scale both according to instructions and not.
- The information contained in this manual is protected by the Polish copyright law (Act on Copyright and Related Rights Dz. U. No. 24 pos. 83). Therefore, the instructions should be treated the same as any other subject of copyright. The buyer is not allowed to distribute, rent, sell or share it in any other way without the written permission of the manufacturer.

Issue V 2016

The author of the following instructions has made every effort, to ensure the instructions are consistent with the given software. However, he does not guarantee that it is free of errors.

GS Software Grzegorz Stolarski
Robert Trawiński General Partnership
st. Półnanki 80 lok 402
30-740 Kraków

<http://www.gs-software.pl>
email: office@gs-software.pl

Copyright GS Software Grzegorz Stolarski
Robert Trawiński General Partnership
All rights reserved

Table of Contents

1. General Information	7
2. Installation	11
2.1 Standard (single device) installation of the program	11
2.2 Launching the software	12
3. Quick Start	12
3.1 Quick software configuration.....	12
3.2 Weighing.....	13
3.2.1 Deflout weighing	13
3.2.2 Basic weighing.....	14
3.3 Entering new data in the system.....	14
3.4 Weighing options	15
3.4.1 Scale selection.....	15
3.4.2 Printing a weighing receipt	15
3.4.3 Warnings and errors on the weighing panel	16
4. Tables	16
4.1 Elements – Contractors.....	17
4.2 Elements - Products	17
4.3 Elements – All Elements.....	17

4.4 Weighing – Weighing list	17
4.4.1 Weighing modification	19
4.4.2 Removing weighings	19
4.4.3 Filtering and sorting in tables.....	20
4.4.4 Weighing chart.....	21
4.5 Weighing – Measuring series	21
5. Reports	22
5.1 Reports Wizard	22
5.2 Templates	24
6. Management/Settings	25
6.1 General Settings.....	25
6.1.1 Archiving databases and configuration files wizard (ConfTrick).....	25
6.2 Database server (configuration of work in networks).....	26
6.2.1 Installation of the database server.....	27
6.2.2 Transferring the database files on the computer acting as server	28
6.2.2.a In case of a new installation – the database doesn’t contain any data.	28
6.2.2.b In case of an already existing installation – database containing weighing	29
6.2.3 Configuration of X-Scale for work in a network	30
6.2.4 Configuration of FireWall – if necessary.....	30

6.2.4.a Operating system Windows XP	31
6.2.4.b Operating systems Windows 7/8	31
6.2.5 Database server (local)	32
6.3 Scale measure	32
6.3.1 Measure connected directly to the computer	33
6.3.1.a Tab - scale	33
6.3.1.b Tab - weighing receipt	34
6.3.1.c Tab – weighing	35
6.3.1.d Tab – camera control	36
6.3.2 Measure connected remotely (Virtual)	36
6.4 License	36
6.5 List of cameras	37
6.6 Diagram for the connection of cameras to X-Scale	38
7. Management/Administration	40
7.1 Users	40
7.2 Permissions	41
7.2.1 Selecting permissions for a given user	42
7.2.2 Adding a new type of users (Premium version)	43
7.3 Glossaries	43

7.3.1 Using a newly created glossary during weighing.....	44
7.4 Element types	45
7.5 Weighing types	46
7.6 Measurement series	47
8. Custom weighing receipts	48
8.1 Creating a custom weighing receipt.....	48
8.1.1 Modification of weighing receipts.....	49
8.2 Importing created weighing receipts	50
9. Weighing windows	50
9.1 Weighing window with tare and zeroing options	50
9.2 Weighing with the counting option	51
10. Help	51

1. General Information

The X-Scale program is used for the operation of scales. Depending on the version, it offers the following functions:

Program's function	Version			
	Standard	Professional	Premium	Premium Plus
The amount of measures supported by the program at the same time	1	3	3	3
Standard measuring mode which enables to input the data of contractors, product name and notes	✓	✓	✓	✓
The ability to create new weighing modes, which contain the data of the standard mode along with two additional glossary fields and information fields		✓	✓	✓
The ability to create new weighing modes, which contain any amount of data (glossary fields and information fields)			✓	✓
The ability to create data glossaries, which are used during weighing			✓	✓
The ability to build any data structure			✓	✓
Usage of the program on the default user account (no login panel)	✓			
Support of program users		✓	✓	✓
Support of user permissions		✓	✓	✓
Work in a network			✓	✓
Support of cameras (analog and IP) – viewing the cameras online and the ability to take pictures while saving the weighing				✓
Weighing with the function of element weighing	✓	✓	✓	✓
Connecting with a weighing measure via RS232 and TCP/IP (depending on the model)	✓	✓	✓	✓
Ability to enter the tare value in the weighing window	✓	✓	✓	✓
Tare of the scale measure (only for selected models of scales)	✓	✓	✓	✓
Zeroing of the scale measure (only for selected models of scales)	✓	✓	✓	✓
The support of alibi memory (only for selected models of scales)				
The ability to execute weighing with series (serial weighing)		✓	✓	✓
The ability to execute weighing in the „PRINT“ mode (only for selected models)	✓	✓	✓	✓

of scales)				
The ability to change the weighing type for a given scale in the weighing window	✓	✓	✓	✓
Incremental searches for data glossaries in the weighing window	✓	✓	✓	✓
The ability to add data to glossaries from the level of the weighing window	✓	✓	✓	✓
The ability to manage the data of glossaries (adding, deleting, modifying)	✓	✓	✓	✓
Access to the weighing list window	✓	✓	✓	✓
Preview of details of the given weighing in the weighing list window	✓	✓	✓	✓
The ability to modify weighing from the level of the weighing list window	✓	✓	✓	✓
Preview of the weighing receipt in the weighing list window	✓	✓	✓	✓
Export of the weighing receipt to formats pdf, rtf, jpeg	✓	✓	✓	✓
The ability to remove weighings in the weighing list window	✓	✓	✓	✓
Preview of the changes history of a given weighing in the weighing list window			✓	✓
Preview of pictures of a given weighing in the weighing list window				✓
Presentation of done weighings in a table or chart	✓	✓	✓	✓
Export of weighing list to formats: txt, csv	✓	✓	✓	✓
Export of weighing list to format MS Excel		✓	✓	✓
Saving of charts as „bmp“	✓	✓	✓	✓
Chart area zoom function	✓	✓	✓	✓
Adjusting the chart's area	✓	✓	✓	✓
Weighing search in the weighing list window	✓	✓	✓	✓
The ability to filter and sort elements in tables	✓	✓	✓	✓
Function allowing for automatic printing of the receipt after weighing	✓	✓	✓	✓
Prints in graphic and text modes	✓	✓	✓	✓
The ability to print a logo on the weighing receipt (in the graphic mode)	✓	✓	✓	✓
Two printing modes for the weighing receipt (automatic and on the scale operator's demand)	✓	✓	✓	✓
Tools allowing to change the appearance of weighing receipts	✓	✓	✓	✓
The ability to print pictures on the weighing receipt			✓	✓
Reports wizard		✓	✓	✓
Export of reports to formats: pdf, rtf, jpeg, xls		✓	✓	✓

Saving of report templates		✓	✓	✓
Ability to change the name and remove report templates		✓	✓	✓
Window for the management of measurement series		✓	✓	✓
Automatic opening of the camera preview window while opening the weighing window			✓	✓
Work in full-screen mode	✓	✓	✓	✓
The ability to set-up the data separator in exported files in formats txt and csv	✓	✓	✓	✓
A tool which allows to archive the database and transfer the configuration onto a different computer	✓	✓	✓	✓
The ability to set-up the numbering of weighing receipts	✓	✓	✓	✓
A function which allows to close the application protected with a password	✓	✓	✓	✓
A function which allows to minimize the application protected with a password	✓	✓	✓	✓
SQL Console			✓	✓
The ability to create only a single set of licensing data	✓			
The ability to create any number of licensing data sets		✓	✓	✓
The ability to change the elements' measures in the weighing window	✓	✓	✓	✓
The ability to change the font size for displayed values on the weighing window	✓	✓	✓	✓
The ability to change the font size for the mass unit on the weighing window	✓	✓	✓	✓
Language version: Polish	✓	✓	✓	✓
Language version: English	✓	✓	✓	✓
Language version: German	✓	✓	✓	✓

Tab. 1 Table describing the program's functions

Minimum system requirements	
Computer: Processor Intel Pentium 4 512 RAM 100 MB of free hard drive space	Operating system: Windows 2000 (SP4) Windows XP (SP3) Windows Vista (32bit/64bit) Windows 7 (32bit/64bit) Windows 8 (32bit/64bit) Windows 10 (32bit/64bit) Windows Server 2008 Windows Server 2008 R2

2. Installation

1. In order to install X-Scale, insert the disc into the CD or DVD drive.
2. After booting, the disc should open the installation panel on startup, as seen on Fig. 1
3. If the installation panel doesn't appear, you must open „Windows Explorer”, go to your CD/DVD drive and open the file „Autostart.exe”.

2.1 Standard (single device) installation of the program

In order to install X-Scale:

1. Click with the left mouse button on X-Scale – the software installer will launch
2. After reading and accepting the license agreement, in case of a standard installation you should accept all settings suggested by the installer.

WARNING: At the beginning of the installation the language may be changed. The local database will be setup to support the selected language. After installation you won't be able to change the language supported by the database. The interface language may be changed at any point during work with the application.

Tab „Work in network” on the installation panel is used to install and configure the database server. More about the configuration of work in a network is described in chapter 6.2

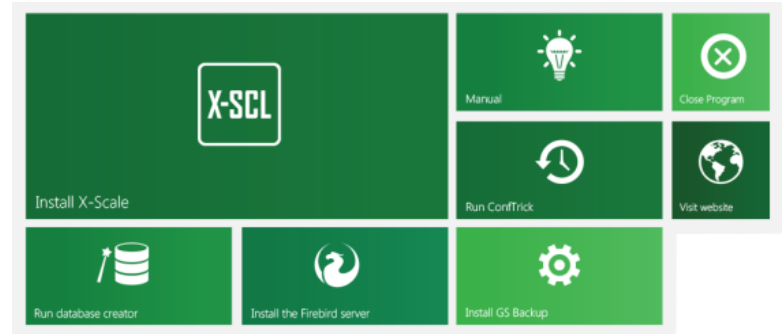


Fig. 1 Installation panel of X-Scale

2.2 Launching the software

Launching the software is done by selecting the icon from menu Start: START/All Programs/GS Software/X-Scale/X-Scale.exe or by double clicking the same icon located on the desktop (Fig. 2)

After launching the application, the login panel will appear (Fig. 3)

After entering the password, X-Scale is ready to work. The default password is: „xscale”.

For X-Scale to function properly, an activation USB key is required. Without the USB key, the program will be blocked.

The program in a trial version might work without a USB key for a set by the manufacturer amount of time, however, it cannot be used for commercial purposes.

3. Quick Start

3.1 Quick software configuration

The configuration window will appear after clicking the „Settings” button on the main toolbar of the program, in the „Management” tab. In order to open the settings window, other windows must be closed.

- **Database server** – configuration of the database file, set on default for the local database. in order to use the network database, see chapter 6.2
- **Scale measures** – in this window you must select the correct scale measure and its parameters. more about the configuration on chapter 6.3
- **License** – in this window we enter the data of the licensing company



Fig. 2 Start-up icon of X-Scale

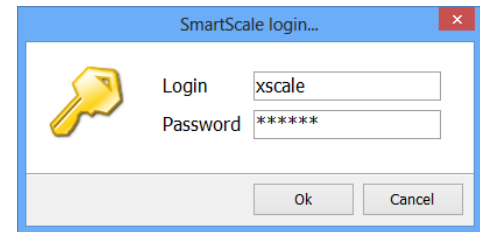


Fig. 3 Login panel

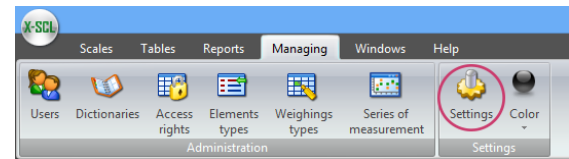


Fig. 4 Settings of X-Scale

3.2 Weighing

By default, the X-Scale program allows for following weighing:

- Default weighing
- Basic weighing

In order to access the default or basic weighing panel:

Click on the „Scales“ button located on the main form of the program, and choose whether it should be a default or testing scale. In the Professional and Premium versions, you have the ability to add a larger amount of weighing modes.

The standard configuration of the program is foreseen for the regular usage of scales, and assumes the presence of only two tables: Contractor and Product. If there exists a need for other weighing information (for example tank number or last name of the driver), then it's possible to add additional tables and information fields in the configuration of the program. For the purpose of the following instructions, we assume that there only exist the Contractor and Product tables.

3.2.1 Default weighing

For the default weighing there exist attributes such as: contractor, product, notes

In order to do a default weighing, you have to:

1. Enter the contractor (Shift + F2) or select from list (F2)
2. Enter the product (Shift + F3) or select from list (F3)
3. Enter notes for the weighing if necessary
4. Select a product from the list or enter a new one (F2 key), press ENTER
5. Click on the BEGIN WEIGHING button (Ctrl + Space)
6. After the mass on the scale stabilizes – the weighing will commence

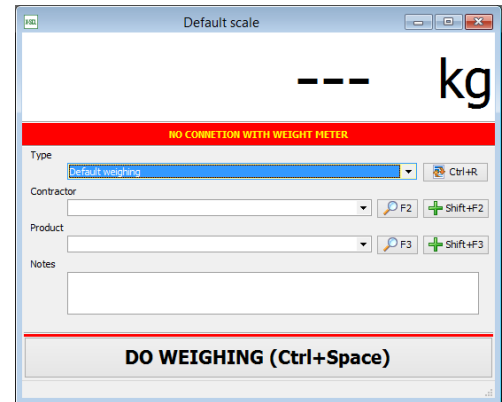


Fig. 5 Weighing panel

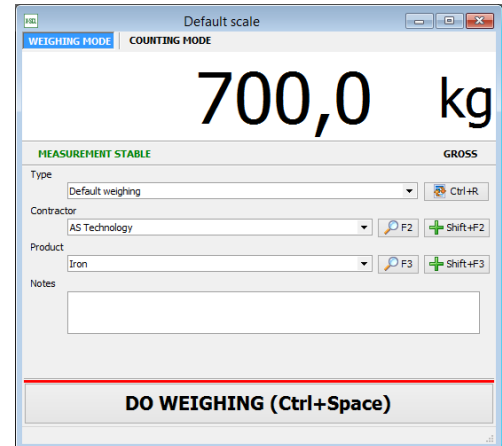


Fig. 6 Default weighing

3.2.2 Basic weighing

In the basic weighing we don't have to fill in any fields such as contractor, product, we can only do the weighing. (these options may be changed in the settings of the program, and custom fields for weighing may be added).

If there are many similar, very often used entries in the database, you can speed up the search of the value by using correct code. For example, „Polish National Railways comp. Krakow” could be given a shortcut PNRKR – by entering it in the text field and confirming with the ENTER key, the field will be filled in with the proper, full name of the contractor.

3.3 Entering new data in the system

All information about contractors, products etc. are kept in the database tables. If during weighing you can't find the correct entry in the database, then you must add it. The standard configuration of the program assumes the presence of two tables: *Contractor* and *Product (standard weighing)*. The window used for entering new contractor details is shown on Fig. 7 The only required contractor information is its name. In order to add data to the database, you must:

Go to the „Tables” tab – and choose correctly for example contractors, and there, by using the “Add” button enter the data of the new contractor.

Adding data to other tables is similar. Filling up the code field is optional, but in case of several similar entries in the database, the code value might make them easier to find. Code is used for entering data before the process of weighing. Opening the window for entering new data is done by pressing the correct function keys.

The screenshot shows a dialog box titled "New element...". It has a close button (X) in the top right corner. The dialog contains the following fields and controls:

- Name:** AS Technology
- Type:** Contractors (dropdown menu)
- Contractor code:** 1245/OR/84
- Address:** Long Street 145
- Postcode and city/town:** London
- VAT ID:** (empty text field)
- Active:** Active
- Data:** A tab on the right side of the dialog.
- Buttons:** Ok and Cancel buttons at the bottom right.

Fig. 7 Window for entering new contractor details

3.4 Weighing options

3.4.1 Scale selection

The X-Scale program is designed for work with multiple scales at the same time (apart from the Standard version). Switching between the different scales is done by pressing the correct button (Fig. 8)

3.4.2 Printing a weighing receipt

Depending on the configuration of the program, there are two possible receipt printing modes:

- automatic
- print on demand

In the automatic mode, the receipt is printed automatically after each weighing. The „print on demand” function is useful in case of printing a custom amount of receipts for a given weighing, or when you require to print the last receipt.

In order to print a given weighing print, you must:

1. On the main form of the program, go into the „Tables” tab, and then „Weighing list”
1. From the weighing list, select the desired weighing – for which you would like to print a weighing receipt
2. Click on the „Weighing receipt” button
3. Next, on the topmost toolbar, click on the printer icon

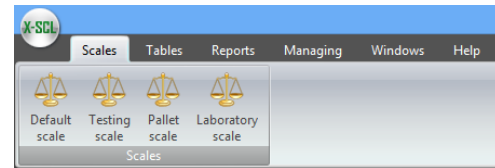


Fig. 8 Scale selection window

3.4.3 Warnings and errors on the weighing panel

Warnings and errors which might appear on the weighing panel:

- **No connection with the scale's measure**
 - Check if the measure is turned on
 - Check if there is a cable connection between the measure and the computer
 - Check in the program's configuration, whether the correct measure model and COM port number is selected

In order to see the details of the error, you must double-click the error's text, under the weighing window – then a new window should appear, which further describes the error

4. Tables

The database of X-Scale is divided into tables. The user has the ability to view and modify data. In order to “enter” the correct table, you must go into the “Tables” tab located on the main form of the program.

Default tables of the program

- **Weighing:**
 - Weighing list
 - Measurement series
- **Elements:**
 - All Elements
 - Contractors
 - Products

For simpler movement through long lists containing many entries, there are several useful commands, which every window of the table contains.

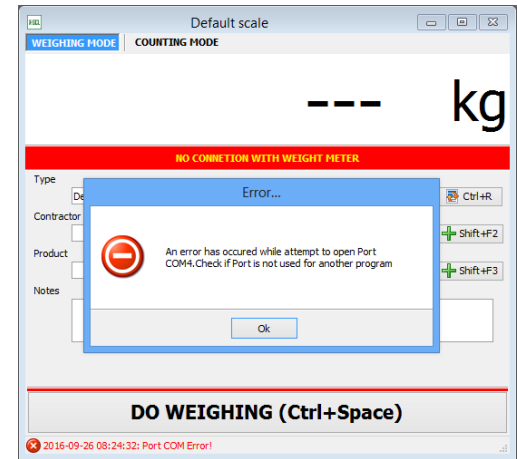


Fig. 9 Error description

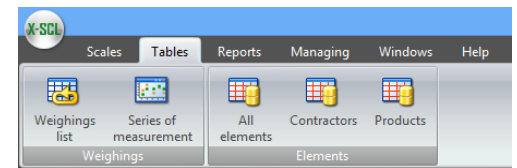


Fig. 10 Default tables

4.1 Elements – Contractors

This table contains telephone/address information of the contractors. Entries in the database may be modified, that means, you can add a new position, change the already existing content or delete any part of it (under the condition that for the given contractor there has not been assigned a weighing yet). Adding new information or changing the existing is done through the window opened with the Add or Edit button. The only required information during the process of adding a new contractor is the name. The name must be unique within the table.

4.2 Elements - Products

This table contains a list of products weighted on the scale. Adding, removing, or modifying the data works analogically like in case of the contractors table. The products table, by default contains two columns: Name, Product code. In order to add new records, you are only required to fill in the Name field.

4.3 Elements – All Elements

This table shows all entries both in the products and contractors tables (default configuration of the program)

4.4 Weighing – Weighing list

Each completed weighing is saved in the database under a unique number and is assigned to the currently logged in operator. The weighing list window is shown on Fig. 11. The weighing list window is by default opened with the list of weighings done up to a week back.

The user is able to:

- Modify information assigned to the given weighing
- Remove a weighing (only an user with administrator rights)
- Print the weighing receipt
- Search a weighing by date, number of weighing or the name of the contractor
- Export the weighing list

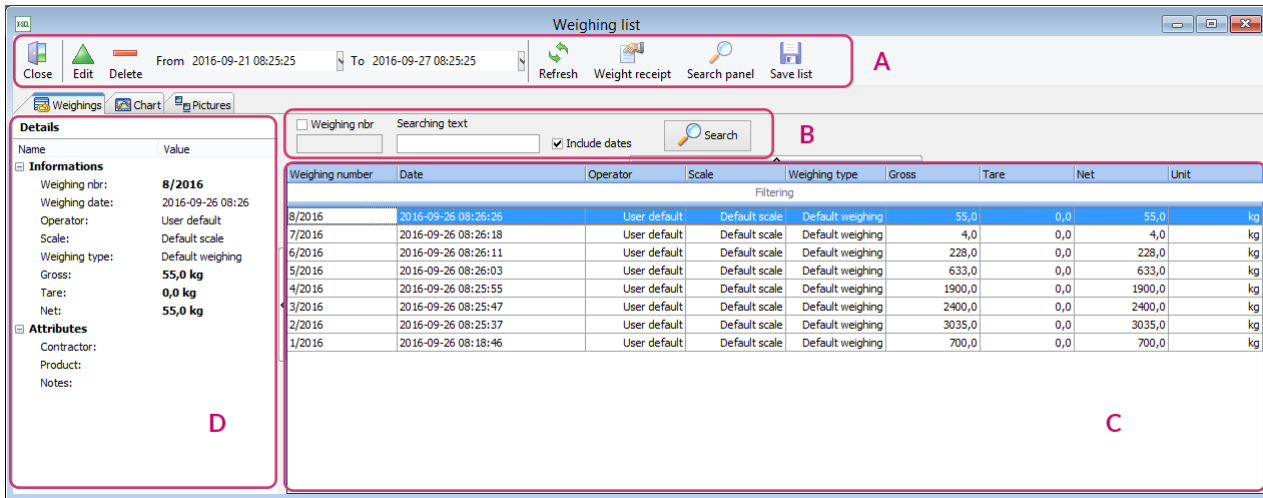


Fig. 11 Weighing list window

- A. Weighing list toolbar
- B. Weighing search panel
- C. Weighing list;
- D. Detailed panel of the selected weighing

4.4.1 Weighing modification

Information assigned to the weighing may be modified (aside from the value of mass, last name of the operator and the date of the weighing). Each change is registered in the database and assigned to the currently logged in operator. The font color of a modified weighing on the list will change to blue. After opening the edit window for a modified weighing, a tab “Changes history” will appear (only Premium version).

In order to modify a weighing:

1. On the weighing list select the row you'd like to modify
2. Select the Edit option
An edit window will appear, like on Fig. 12
3. Make the desired changes and click on the Save changes button

4.4.2 Removing weighings

Operator with administrator rights for the X-Scale program may remove weighings from the weighing list. The removed weighing isn't physically removed from the database, but only stops being visible on the list. Removing a weighing is assigned to the currently logged in operator. A removed weighing is marked in red and becomes additionally crossed

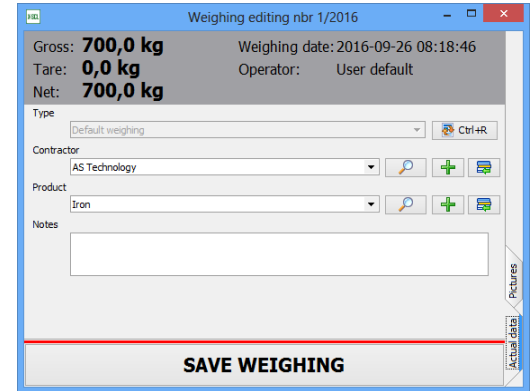


Fig. 12 Weighing edit window

4.4.3 Filtering and sorting in tables

For quick searching of weighings or groups of weighings, for example, a given contractor in a specific period of time, we created a search engine. Records may be filtered according to the following criteria:

- The header of the column with an arrow symbolizing the sorting direction
- Area for choosing the data filtering values
- List of elements
- Filtering value with the button for the removal of filtering

Weighing number	Date	Operator	Scale	Weighing type	Gross	Tare	Net	Unit
	2016-09-26			Default weighing	0	0	0	
9/2016	2016-09-26 08:27:20	User default	Default scale	Default weighing	2555,0	0,0	2555,0	kg
8/2016	2016-09-26 08:26:26	User default	Default scale	Default weighing	55,0	0,0	55,0	kg
7/2016	2016-09-26 08:26:18	User default	Default scale	Default weighing	4,0	0,0	4,0	kg
6/2016	2016-09-26 08:26:11	User default	Default scale	Default weighing	228,0	0,0	228,0	kg
5/2016	2016-09-26 08:26:03	User default	Default scale	Default weighing	633,0	0,0	633,0	kg
4/2016	2016-09-26 08:25:55	User default	Default scale	Default weighing	1990,0	0,0	1990,0	kg
3/2016	2016-09-26 08:25:47	User default	Default scale	Default weighing	2400,0	0,0	2400,0	kg
2/2016	2016-09-26 08:25:37	User default	Default scale	Default weighing	3035,0	0,0	3035,0	kg
1/2016	2016-09-26 08:18:46	User default	Default scale	Default weighing	700,0	0,0	700,0	kg

Filtering: (Date = 2016-09-26) and (Weighing type = Default weighing)

Fig. 13 Tables filtering

Most of the tables in the program have the option for simple data filtering and sorting. In order to sort data according to a selected column, you must click on its header. An icon symbolizing the sorting direction will appear (either up or down). In order to change the sorting direction, you must click the column's header once more.

In order to filter data according to a selected column, you must click the column in the "Filtering" field, and select the filtering value depending on the type of data. For example, for numbers, you must enter the value and press "Enter", for glossary values, you must select a value from the drop-down list and press "Enter". After selecting the filtering's value, fitting elements will appear on the lower part of the table. Filters can be added up, so you could for example filter based on two or more columns. In order to remove a filter, you must click on the cross which appears together with the filter values on the lower part of the table. After refreshing the table, sorting and filters will be removed.

4.4.4 Weighing chart

A. Main toolbar

- „From, „To” – date scope for the chart
- „Scale” – scale selection field
- „Type” – weighing type selection field, the weighing type changes depending on the selected scale
- „Refresh” – Refresh the chart

B. Chart's toolbar

- „Minimize the chart”, „Reduce the chart's size”, „Adjust” – changes the chart's size
- „Save the chart as image” – saves the visible on screen chart as an image (a file with the .bmp extension)

C. Area of the chart

- Navigation (enlargement, return to the default size) moving through the chart is done with the mouse

D. Legend – legend described visible series on the chart, which may be hidden according to your needs

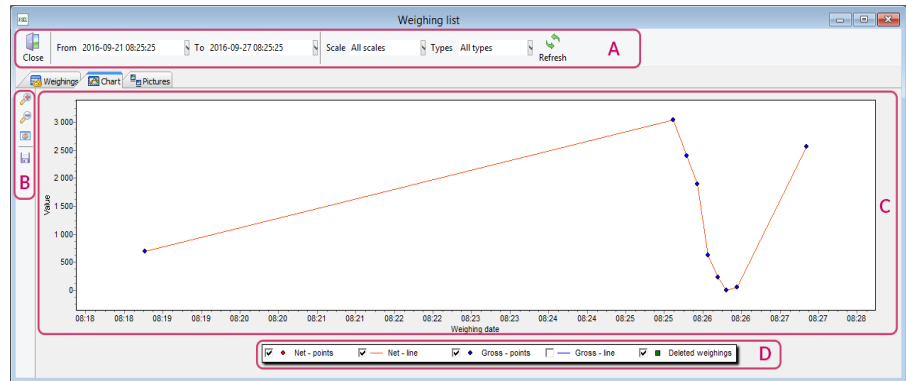


Fig. 14 Weighing list chart

4.5 Weighing – Measuring series

This table contains weighing, which was done as a series. In this window, same as on the weighing list, we can see the finished weighing operation, and we can also create a chart from a serial weighing. The chart works and is operated same as the one on the weighing list.

5. Reports

5.1 Reports Wizard

The Reports Wizard command from the Edit menu on the main form the program launches the reports wizard, in which the user in three steps defines the report's contents.

In order to create a standard report, you must:

1. Select the "Reports Wizard" from the "Reports" menu on the main form of the program.
2. Select the date range, in which the report should be made
3. In the „Scale“ we choose the scale for which we want to create a report, if we want to generate a report for all scale, we select the "All Scales" option
4. Select the "Weighing type"
5. Press „Next“ for the next step
6. In the table you must select, which fields will be visible in the report (if the field should be visible, then the „Add“ column should be checked") and if required, select for which values of attributes the report should be created. Values may only be given for fields of elements (for example contractor, product) and glossaries. If the field is of glossary or element type, then after clicking in the column "Values" the icon of a magnifying glass will be visible, thanks to which we can easily find the desired value. (Fig. 15)
7. Press the „Next“ button to move on to the next step
8. In the following window select the field, with which the report will be sorter. After clicking the "Report" button, a preview of the report will be shown on the screen. If there are no weighings meeting the required criteria, then a corresponding message will appear on the screen. If we press the Export to MS Excel button – the report will be generated in an .xls file.

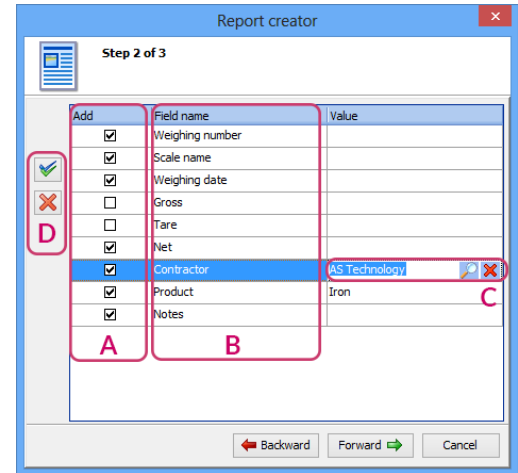


Fig. 15 Reports wizard window – step 2

- A. A check mark indicating whether the attribute should be in the report;
- B. A list of possible attributes in the report;
- C. Values of the attribute for which we are creating the report with search and remove buttons;
- D. Buttons, with which you can check/uncheck all attributes.

AS Technology Long Street 145 London			REPORT FOR PERIOD from 2016-09-26 to 2016-09-26 23:59:59 Report date 2016-09-26 08:32:59			
Report criteria Scale Default scale Weighing type Default weighing Sorting Scale name ascending						
Weighing number	Scale name	Weighing date	Net	Contractor	Product	Notes
1/2016	Default scale	2016-09-26 08:18:46	700,0	AS Technology	Iron	
6/2016	Default scale	2016-09-26 08:26:11	228,0	AS Technology	Iron	
Total						Net: 928

Fig. 16 Report preview

5.2 Templates

Thank to this option, the user is able to generate a report without the need of following all the steps. After clicking a single button, the report will be generated in a way prepared by us with a template.

Adding a new template:

1. First create the report same as in case of the reports wizard
2. In the third step, instead of clicking the “Generate report”, click on “Save as template”
3. Enter the template’s name, for example „Report for scrap”
4. If you want a button on the menu bar for quick creating of this report, check the option “Show report in menu” Fig. 17
5. If you want to have the option to choose a date range, select the “Possible to change report’s dates” option.
6. Click „OK”

To use the created template – you can place it on the menu bar as seen on Fig. 17 or in the process of creating a report, select the template from list in the first step, and click on the “Next” button.

In order to delete a created template, you must go into the Reports/Templates tab, select the unwanted report, press the remove button, and confirm with the save button.

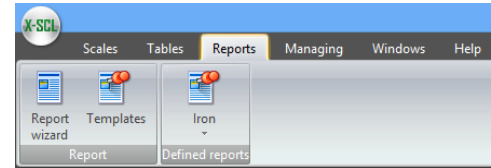


Fig. 17 Report template on the menu bar

6. Management/Settings

In this tab we have the option to configure the program, and after clicking appearance – we have the option to change the default black color of the application. In the following part, only the settings will be described.

6.1 General Settings

- **Fullscreen mode**
If this option is checked, then the program will be stretched for the entire screen's size.
- **Weighings export separator**
Changes what symbol the values will be separated with while exporting weighing files. In order to properly see the exported weighing file with a CSV extension, you must select the correct separator, the same as selected in the Excel program.
- **Application language**
Changes the application's language – available are Polish, English, German, Spanish, Romanian
- **Weighing number**
In this field we can decide from which number the program should start numbering weighings in a given year – by default it is no. 1. This function is helpful for example in case of a computer malfunction, when we know that the previous weighings were finished for example on the number 2345/2013. The numbering may only be changed forwards.

6.1.1 Archiving databases and configuration files wizard (ConfTrick)

With this program, you can create backup copies of the entire program's configuration, along with the database files (if a local database exists) – the program doesn't create copies of network databases.

After clicking on the "ConfTrick" icon, the program will inform us of the requirement to close X-Scale – confirming with the "Yes" button will close the X-Scale program – afterwards you must follow the instructions shown on ConfTrick.

6.2 Database server (configuration of work in networks)

The local database server is the default setting for connecting X-Scale with a database – after the installation of the program, the database doesn't require changes of any settings for correct functioning. The local database server allows only one user to use the same database at the same time. A remote database server should only be configured when the X-Scale program is required to work in a network. The X-Scale program is designed to work in a network with any number of operators.

In case of work in a network, the computer which acts as the database server, may, but doesn't have to have X-Scale installed. However, the computer is required to have a static IP address.

The process of connecting X-Scale programs to a network is divided into four stages:

1. Database server installation
2. Transferring the existing database file (or creating a new database) on the computer acting as the database server
3. Configuration of the X-Scale programs to work in a network
4. Configuration of FireWall – if required

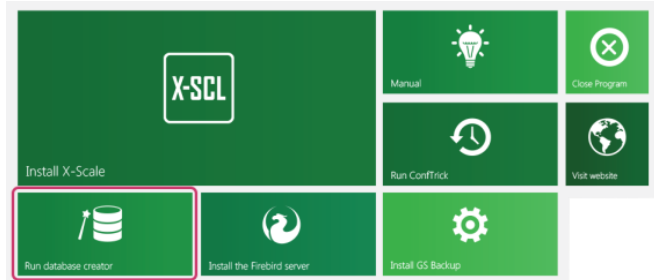


Fig. 18 X-Scale installation panel – launching the database server installer

The installation of a database server may be found on the installation disc of X-Scale

!!! WARNING !!!

During the process of copying database files, all programs using this database must be closed with no exceptions.

Otherwise, there's a danger of a permanent damage to all the database files.

When we copy the database from the installation disc, it's set as "Read only" – in order to be able to use such a database, we must uncheck the read type in the file settings. In order to do this, click on the database with the right mouse button, go into the "Properties" menu, and uncheck the "Read only" box.

6.2.1 Installation of the database server

In order to install a database server, you must:

1. On the computer acting as a database server, insert the installation disc of X-Scale to the DVD/CD drive. After starting, the disc should launch the installation panel as seen on Fig. 18. If the installation panel does not appear, then you must launch "Windows Explorer", go to the CD/DVD drive and launch the "Autostart.exe" file.
2. On the installation panel, click on the position of "Install Server Firebird" with your mouse – the installation process of the server will begin.

!!! WARNING !!! While installing the database server on systems Windows 2000 and Windows XP, you must accept all settings proposed by the installer. On systems Windows Vista, you must UNCHECK the installation of applet in the control panel window – Fig. 19

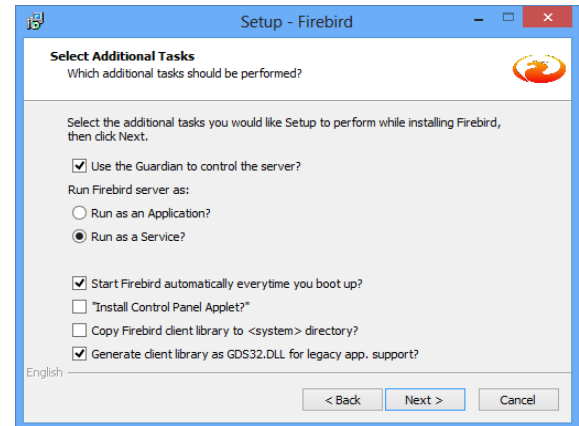


Fig. 19 The database server installation window

After the correct installation of the database server, all that remains is transferring the database files onto the computer acting as database server and configuring the X-Scale programs to work in a network.

6.2.2 Transferring the database files on the computer acting as server

6.2.2.a In case of a new installation – the database doesn't contain any data.

In order to create a new clean database, you must:

1. On the computer acting as a database server, insert the installation disc of X-Scale to the DVD/CD drive. After starting, the disc should launch the installation panel as seen on Fig. 18. If the installation panel does not appear, then you must launch "Windows Explorer", go to the CD/DVD drive and launch the "Autostart.exe" file
2. On the installation panel, click on the position of "Launch the database wizard" – the configuration program will launch
3. On the first tab of the program, check the "Create a new database" option, and click the "Next" button
4. On the second tab of the program, select the location (folder), in which the "empty database" will be created (Fig. 20). For instruction purposes, it'll be "C:\Database"
5. Select the code page of the database (Polish by default)
6. Click on the "Create new database" button. The successful creation of a database will be confirmed with an appropriate message
7. If you want to automatically configure the weighing program for remote work, check the option in the 3rd step, and fill in the IP address.

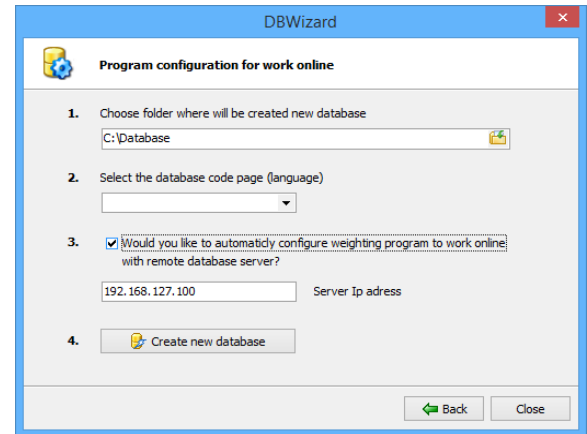


Fig. 20 Creating a new empty database

6.2.2.b In case of an already existing installation – database containing weighing

In case of having a database with done weighings on one computer, and we want the database to become a network database, then we must transfer it to the computer acting as the database server. For the purpose of the automation of this process, you can use the program for database configuration found in the package together with X-Scale.

In order to copy an existing database, you must:

1. On the computer acting as a database server, insert the installation disc of X-Scale to the DVD/CD drive. After starting, the disc should launch the installation panel as seen on Fig. 18. If the installation panel does not appear, then you must launch “Windows Explorer”, go to the CD/DVD drive and launch the “Autostart.exe” file
2. On the installation panel, click on the position of: “Launch the Database Wizard” – the configuration program will launch
3. On the first tab of the program, check the “Copy local database” option and click on the “Next” button
4. On the second tab of the program select the location (folder) in which to copy the existing database (Fig. 21). For the purposes of this demonstration, it will be “C:\Database”
5. Press the “Copy the local database” button. The successful copy of the database will be confirmed with an appropriate message.
6. If we want to automatically configure the weighing program for remote work, we must check the option in step 2, and fill in the IP address.

After a successful copy of the database files, in the target folder should appear a file called SmartScale.fdb. This file must be transferred to the computer acting as the database server on any location (for instruction purposes it's C:\Database)

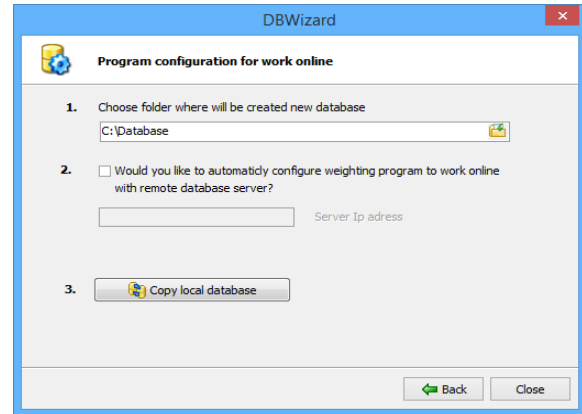


Fig. 21 Copying of an existing database

6.2.3 Configuration of X-Scale for work in a network

The last element necessary to enable work in a network is configuring the X-Scale program to work with the remote database server.

For the purposes of the following instruction, we assume that the computer's IP address is "192.168.1.10" and the database file will be located on "C:\Database"

In order to connect X-Scale to a remote database:

1. Enter the configuration of X-Scale (menu Management/Settings – Fig. 22
2. On the "Database server" tab, check the option "Remote database server (work in a network)"
3. Enter the server's IP address : 192.168.1.10
4. Enter the full path to the database file: "C:\Database\SmartScale.fdb"
5. Do a connection test

If the test connection was done successfully, close the program and launch it again. After launching the program, it will start working in a network version.

6.2.4 Configuration of FireWall – if necessary

If on the computer acting as database server will be installed a FireWall, then there might be a situation, in which the connection to the database might not happen. In this case, we must manually open the port 3050, as the database server used by X-Scale works on this port. In case of using anti-virus programs, which act as firewall, for example Kaspersky, Norton, ESET etc. information on how to add an exception to the firewall you may find on www.gs-software.pl on the FAQ page.

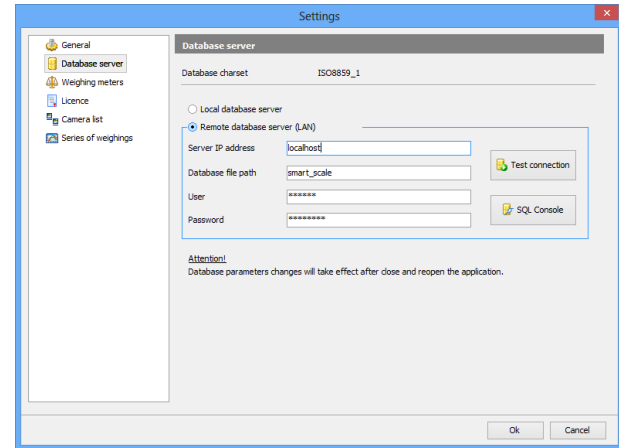


Fig. 22 An example of connection configuration for a remote database server

6.2.4.a Operating system Windows XP

In order to manually open the port 3050 on operating system Windows XP you must:

1. Enter the control panel and double click the icon: Windows firewall
2. Enter the Exceptions tab and press the Next button. A window for adding a port will appear. Enter a name (eg. X-Scale scale), port 3050 and check the TCP protocol. Click on the "OK" button
3. In the "Windows firewall" window click on the "Ok." button

In this moment, the connection test for the remote database server should end successfully

6.2.4.b Operating systems Windows 7/8

1. Enter the control panel and go into the "System and security" category
2. Click on the "Windows firewall" icon (Fig. 23)
3. Next "Advanced settings"
4. With your right mouse button, click on "Inbound Rules"
5. From the drop-down menu, select „new rule“
6. In the next window, check the option "Port" and click on the "Next" button
7. Check the TCP option, set the port to 3050, and click "Next"
8. Check the option "Allow connection" – "Next"
9. In the Profile menu – Leave all options checked – "Next"
10. As name, enter for example "X-Scale scale" – then click on the finish button
11. Now, with your right mouse button click on "Outbound Rules"
12. Repeat steps 5-10

After finishing these steps, the connection test with the remote database server should end successfully.

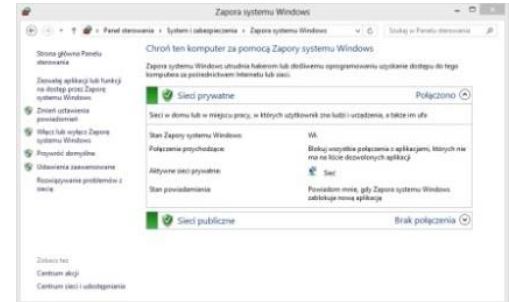


Fig. 23 Firewall settings window for Windows 7/8

6.2.5 Database server (local)

If we don't want to use the server database, we can check the option "Local database server", then our database is saved locally on the computer in the default program path (**if the database server is local, you're not able to use the remote connection of scales**).

6.3 Scale measure

The X-Scale program can at the same time support multiple scales. The "Scale measure" tab is used for configuring the connection with the scale measure, and allows for additional options, such as:

- Starting the scale after program start-up
- Enabling the support of Alibi memory
- Camera operation
- Printing the weighing receipt automatically after completion

There are two ways to connect the scale measure to the computer:

- Connecting the measure directly to the computer
- Connecting the measure remotely – remote connection (measure connected to a different computer)

Depending on which option we select, the configuration process is different.

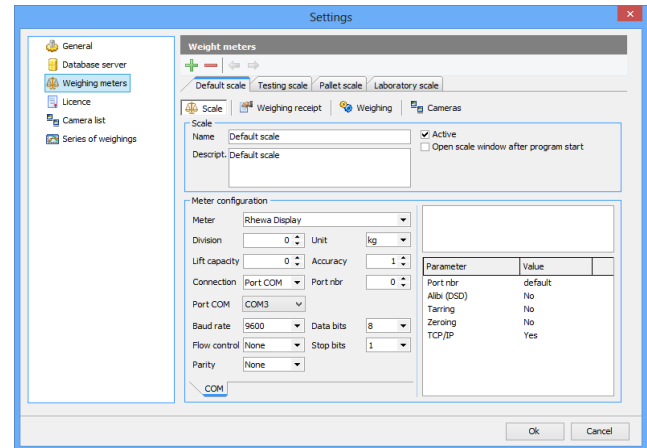


Fig. 24 Configuration of X-Scale – Scale measure

6.3.1 Measure connected directly to the computer

6.3.1.a Tab - scale

- **Scale name** – a shortened name of the scale displayed on the main toolbar.
- **Scale description** – scale description (maximum 500 characters)
- **Active** – if this field is checked, then the scale will be displayed on the main toolbar and weighings on this scale will be possible
- **Start the scale after program start-up** – if this field is checked, then the scale window will be automatically opened upon start-up
- **Measure** – scale measure type
- **Division** – division of the scale measure
- **Unit** – the measure's unit (eg. kg, lb)
- **Capacity** – capacity of the scale measure
- **Accuracy** – the accuracy of the measurements, the amount of decimal spaces (eg. the value of measurement visible on the weighing form).
- **Connection** – the type of connection to the measure. Possible values:
 - Port COM
 - TCP/IP
 - Virtual (in plans)
- **For a connection of type Port COM:**
 - Port COM – the name of the port COM, to which the scale is connected.
 - Speed
 - Control
 - Parity
 - Data bits
 - Stop bits
- **For a connection of type TCP/IP:**
 - IP – IP address or the server's network name
 - Port no. – number of the server's port

6.3.1.b Tab - weighing receipt

Standard settings:

- **Automatically print receipt after completion of weighing** – if the field is checked, then after completion of a weighing, the weighing receipt will be automatically printed
- **Print weighing receipt on the default printer** – if this field is checked, then the weighing receipt will be printed on the operating system's default printer
- **Select the receipt printer** – name of the printer, on which the scale receipts will be printed (this field is unavailable if the „Print weighing receipt on default printer“ is checked)
- **Number of copies** – number of printed receipt copies
- **Print in graphic mode** – print receipts for ink printers, laser, etc.
- **Print in text mode** – print receipts for dot-matrix printers
- **Receipt size** – defines the weighing receipt size (formats A4, A5)
- **Mass information in the measure's memory** – displays on weighing receipt information, whether the mass is saved on the scale measure (if it supports the Alibi memory)
- **Rotate receipt by 90°** - rotates the scale receipt by 90 degrees
- **Footer text of the receipt** – text, which is placed at the footer of the receipt

Additional settings:

- **Print logo on weighing receipt** – if this field is checked, then on the weighing receipt there will be a printed logo (only for printing in graphic mode)
- **Load logo** – button, with which you can select a graphic file as logo (it can be in a BMP or JPEG format)
- **Custom weighing receipts** – more information in chapter 8

6.3.1.c Tab – weighing

- **Components size** – components' size on the weighing form (small, medium, large)
- **Zero the value after weighing** – if this field is checked, then after each weighing, the values of attributes on the weighing form are zeroed (they are assigned empty or default values)
- **Show unit** – while showing the mass, the unit will be shown
- **Weighing mode** – standard weighing mode
- **Counting mode** – activates the counting mode Fig. 25 more about this mode in chapter 9.2
- **Round the result** – this option appears after we activate the counting mode – the operator is able to set whether the result should be rounded up or down
- **Enable the support of Alibi memory (DSD)** – If this field is checked, then the program will support alibi memory of the scale measure (alibi memory is the memory of a scale measure, which saves in its own memory all the weighings)
- **Enable tare support** – enables the tare function from the program's level – if the measure supports this feature – more in chapter 9.1
- **Enable zeroing support** – enables the zeroing function from the program's level – if the measure supports this feature – more in chapter 9.1

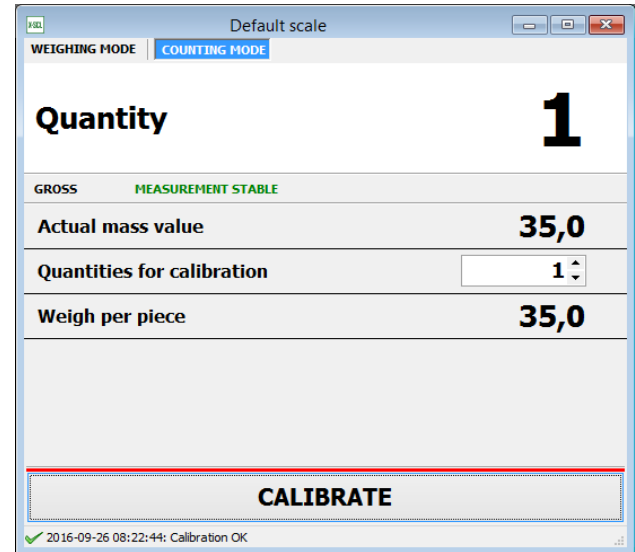


Fig. 25 Counting mode

6.3.1.d Tab – camera control

- **Enable camera operation** – enables camera operation for a selected scale
- **Camera no.1, no. 2...** - sequentially enables the cameras 1, 2, 3, 4
- **Automatically open the preview window when opening the weighing window** – when this option is checked, the camera preview window will be automatically opened upon the start of a weighing.
- **Save images during weighing** – the program will take pictures of the scale during weighing
 - To database – saves images on the database
 - To folder on disc – saves images to a chosen folder

6.3.2 Measure connected remotely (Virtual)

Option available in a future version of X-Scale

6.4 License

- **Name** – The program’s licensee’s company name
- **Address** – The program’s licensee’s address
- **City** – The program’s licensee’s city
- **Tel./Fax** – The program’s licensee’s telephone
- **Set as active** – if you have more than one license, then you are able to select which one is to be loaded by default.

In the X-Scale program we have the ability to add more than one license, this feature is useful if more than one company uses the scales. The licensing data are printed in a header of the receipt and report

Adding a new license template: (Only Professional and Premium versions)

1. Go into the control panel (Management/Settings)
2. Select the License tab
3. Click on the Add button (green icon of the “Add” sign)
4. Fill in appropriate fields and confirm with the “Ok” button

6.5 List of cameras

- **Size of the camera preview** – from the select list or typing in manually, select how large should the camera preview window be
- **Camera preview window** – If we have more than one camera, we must select in which composition the camera preview should be displayed. Available compositions are: symmetrical, vertical, horizontal.
- **Multiplexing of video input** – This option should be checked in case the video card is a card with multiplexed inputs (which means, there's a single video processor responsible for sending the image to all channels). In that case, we must correctly set the fps value for the first channel – (standard values: 12,6,3 fps)
- **Activate camera** – checking this option will activate the camera

6.6 Diagram for the connection of cameras to X-Scale

1. Move to the tab, “Management/Settings/Scale measures/Camera operation”
2. Check the option “Enable camera operation”, and select the number of connected camera
3. Check the option “Save images during weighing” and select where the images should be saved
4. Next we go to the tab “Camera list” in the Settings menu
5. Select the tab “Camera no. 1”, “Camera no. 2” etc. (Depending on which camera you’d like to configure)
6. Check the “Activate camera” option

Analog cameras

7. Check the option „Analog camera”
8. Select the video source (Video card)
9. Select video standard (eg. PAL.B)
10. Video input (Select the input, to which the camera is connected)
11. Jpeg quality – 100 by default (Value in percentage)
12. Fps (max 30 – depends on the video camera)

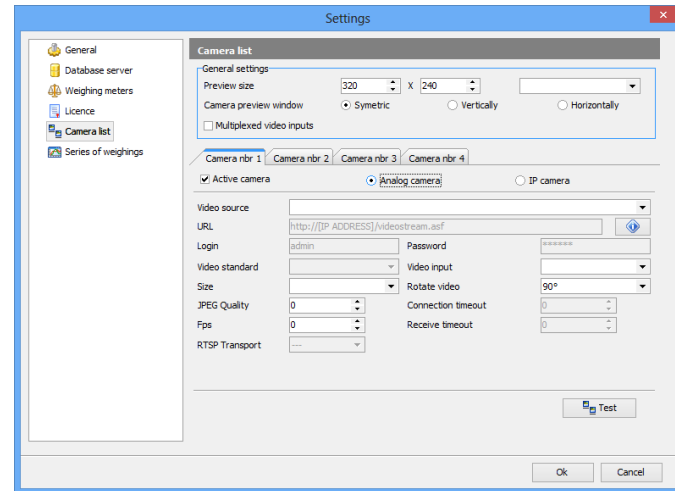


Fig. 26 Camera operation window – analog cameras

Click on Test, to see whether the cameras work correctly

Tip: In case of analog cameras, we have the ability to adjust the brightness, contrast etc. in the program. You only have to click with your right mouse button on the camera preview window, next select Device/Video Proc Amp and by using the sliders adjust the image of the camera.

IP cameras

7. Check the option “IP Camera”
8. In the URL field, click on the green arrow icon
9. Expand the tab with the name of our camera (eg. Airlive)
10. Select one of the links and copy it¹
11. In the URL field paste the copied link, and change the [IP_ADDRESS] for the camera address (eg. 192.168.11.113)
12. In login and password fields, enter the login and password of the IP camera – if necessary

Click on Test, in order to see, whether the camera works properly. In case of the camera’s image not appearing, repeat the steps 8-12 selecting a different URL from the list.

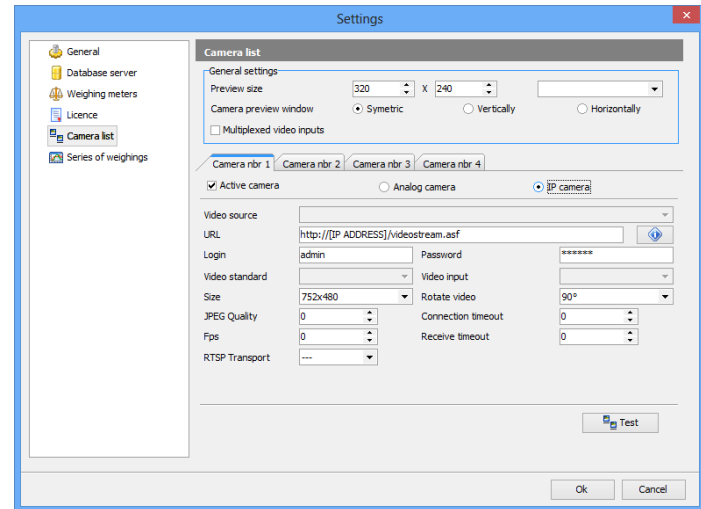


Fig. 27 Camera operation window – IP Camera

¹ We recommend copying links which start with rtsp, but not every camera works with this protocol.

7. Management/Administration

7.1 Users

The user management window allows to add and edit selected users of the program.

In order to add a new user to the program, you must:

1. Click on the “Next” button. A new entry will appear in the table with empty fields which need to be filled in
2. After adding or editing users, you must save the changes with the “Save” button

In order to remove selected users from list, you must:

1. Select the wanted user, and click on the “Remove” button
2. The removed record will be marked in red. After saving the removed records (“Save” button) it will disappear from the list.

WARNING: If the user already has entries in the database, for example has done some weighings, then he cannot be removed. After saving changes, a message will appear, and the record will be deactivated. Deactivated users are unable to login to the program.

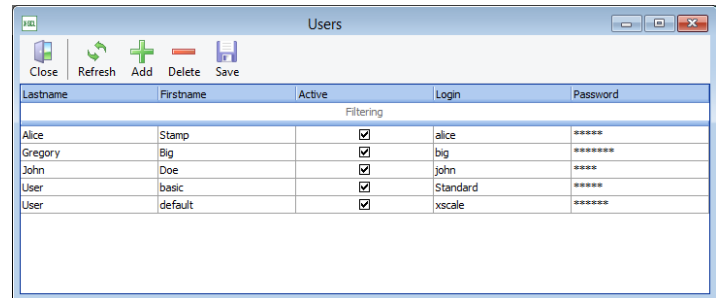


Fig. 28 Users Window

7.2 Permissions

This panel allows to manage the users of the X-Scale program. There are two predicted entry levels: Operator and Administrator (Professional version). In the Premium version it's possible to add additional types of users. Appropriate status is an important element of the user's profile, as the operator's status limits the program's functions. In Tab. 2 you can see the Operator and Administrator accounts compared.

Permission name	Operator	Administrator
Execution of weighings	Full access	Full access
Elements list	Adding and editing own elements	Full access
Weighing list	Read only	Full access
Weighing reports	No access	Full access
Glossaries	Adding and editing own elements	Full access
Element types	No access	Full access
Weighing types	No access	Full access
Permissions	No access	Full access
Settings	No access	Full access
Users	No access	Full access

Tab. 2 Users permissions

7.2.1 Selecting permissions for a given user

A newly added user has the permission status of an Operator. In order to change the permission status of a user, you must open the “Permissions” window.

- A. Permission groups table
- B. List of users assigned to group
- C. List of permissions assigned to selected group
- D. User list
- E. Buttons for removing and adding an user from list

WARNING: If the user belongs to both the Administrator and Operator groups, then he will be treated as an Administrator.

Changing the permission status – for example, we want the user “Jan Kowalski” to be switched from Operator to Administrator.

1. In the groups table, expand (“+” on the left side of the “Operators” name in the table) the Operators group, and check in the expanded table the “Jan Kowalski” record
2. Click on the red arrow between the tables – the record’s color should change to red.
3. Expand the Administrators group and select the record in the expanded details table (even if it doesn’t have any entries on the details table)
4. Check on the users list (table on the bottom right side) the record „Jan Kowalski”
5. Click on the green arrow between tables – a new record should appear on the Administrators list
6. Click on the “Save” button

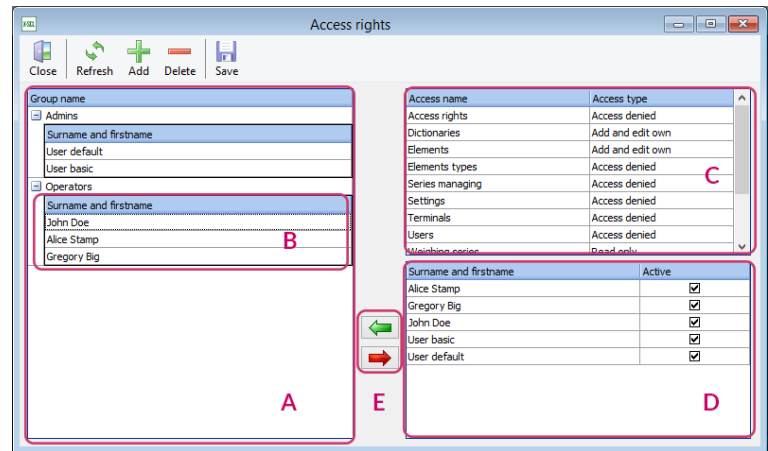


Fig. 29 „Permissions” Window with description

7.2.2 Adding a new type of users (Premium version)

In the Premium version, there's an option to define a user type. To do this, you must:

1. Go into the tab "Permissions" in the Management menu
2. Click on the "Next" button – a new entry will appear on the permissions list – you must give it a name
3. Click on the "Save" button and select the newly created entry on the right side and assign it permissions
4. Click the "Save" button again

After successfully adding a user type, we can assign users to this new group.

7.3 Glossaries

In the Professional version, there exists an option to add to a weighing type glossary values (eg. Package color) which can be selected from a drop-down list. For this, you must first configure the required glossary. In the Professional version we can configure two glossaries, and in the Premium version there are no limits.

In order to configure the required glossaries, first open the glossary management window (The "Glossaries" window on the "Management" tab on the main toolbar).

Example: Configuring a new glossary eg. Steel Type

1. In order to change the glossary name, click on the record in the glossary table in the column "Glossary name", remove the default name (eg. "Glossary 1") and enter "Steel Type". Additionally, we should confirm whether the glossary is checked in the "Activated" column. If not, we must activate it.

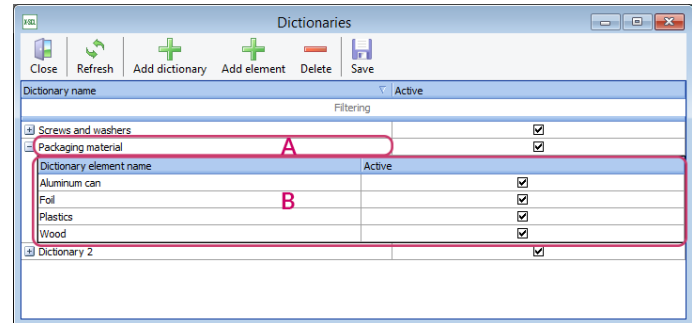


Fig. 30 „Glossary“ Window with description

- A. Glossary name
- B. Glossary elements list

2. Expand (“+” on the left side of the name “Steel Type”) the selected glossary and select the detail list of the glossary (click on the glossary’s detail list).
3. Add a glossary element with the “Add element” button, and give it a name eg. “Steel St4” in the column “Glossary element name”. This way, we add the required elements to the glossary.
4. After configuring the glossary, save it by clicking the “Save” button

Warning: If the glossary “Steel Type” was already used during a weighing, then it shouldn’t be changed to a different glossary eg. “Steel Manufacturer”. The executed weighings with a glossary value “Steel Type” will then be changed for new values of the new glossary.

7.3.1 Using a newly created glossary during weighing

In order to use our glossary, we must:

1. Add a glossary attribute to element types (Management/Element types)
2. Press the “Add attribute” button
3. Enter the attribute name eg. “Steel Type”, select the data type “Glossary value”, as kind select the created glossary “Steel Type”
4. Click on the Save button
5. Next go into the settings of weighing types (Management/Weighing types)
6. Check for example standard weighing and click on Add Attribute
7. From the drop-down list select “Steel Type”
8. Click on the Save button

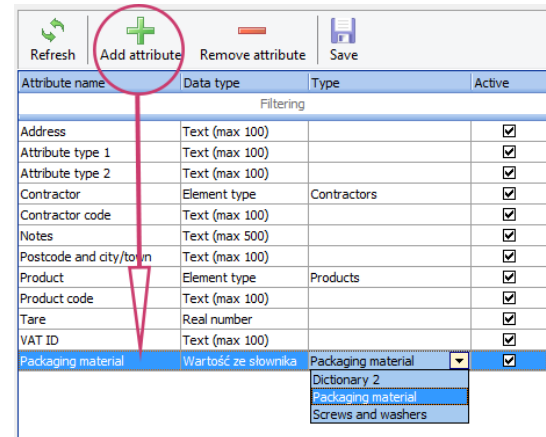


Fig. 31 Adding a glossary to the element type

7.4 Element types

In order to be able to configure the new weighing type with new attributes, they must first be properly configured.

Adding a new attribute (right side of the „Element types” window):

1. Click on the “Add Attribute” button
2. Type in the name of the attribute, select data type and data kind
3. Click on the Save button

Adding a new element (left side of the “Element types” window):

1. Click on the “Add Type” button
2. Type in the name of the element
3. Go into the attributes list, select the required attribute
4. Click on the green arrow (between the tables)
5. Click on the “Save” button

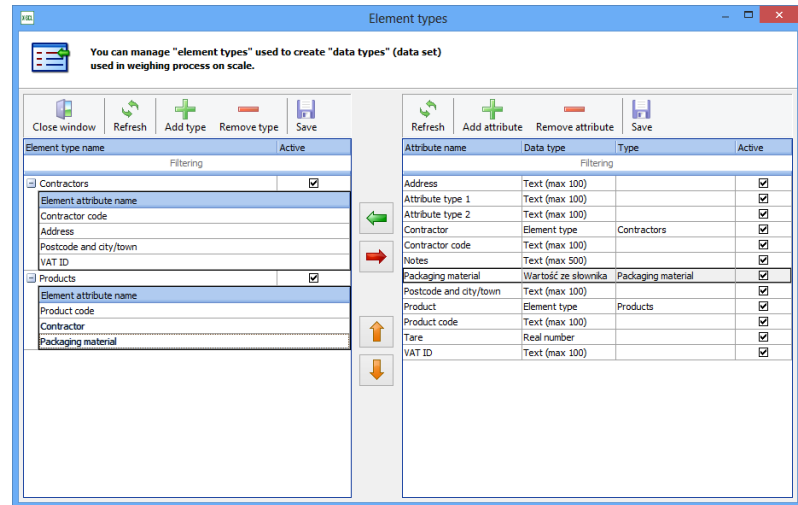


Fig. 32 „Element Types” Window

7.5 Weighing types

In the Professional version, there exists an option to configure the weighing type. To the selected type we can also add besides the standard attributes (contractor, product, notes), two additional text attributes.

- Name of the weighing type
- Attributes list assigned to the weighing type
- List of scales with assigned weighings
- Add and remove button for the scale's weighing types
- Add (remove) button for the weighing types
- Add (remove) button for attributes of the selected weighing

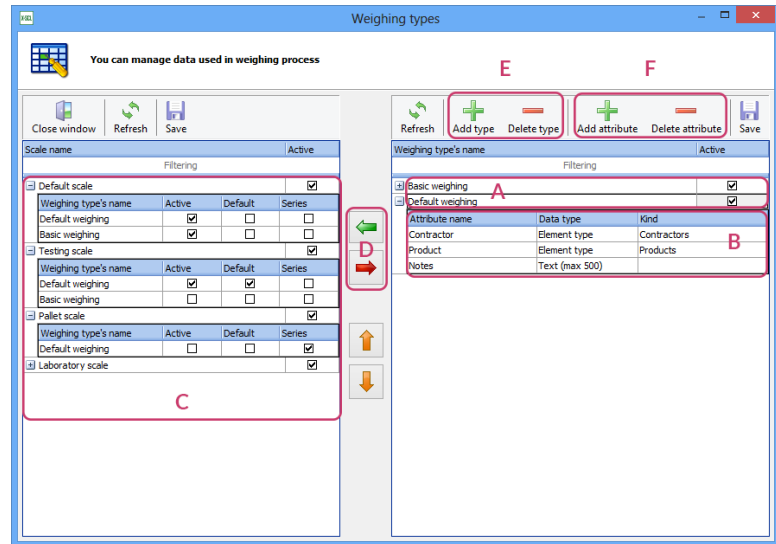


Fig. 33 „Weighing types” window with description

Example: Creating a new weighing type with attributes: contractor (already existing attribute), Steel Type (glossary attribute), operator's notes (text attribute).

1. In the weighing type table (on the right side) add a new weighing type with the "Add type" button. A new record should appear, which we must name in the "Weighing type name" column, eg. "Steel Weighing"
2. Expand ("+" on the left side of the new name) the weighing type and select the expanded list (even if empty)
3. Add a new attribute with the "Add attribute" button. There should appear a new empty record. In the "Attribute name" column, select from list "Steel Type". In order to create the attribute, look at chapter 7.4
4. Add another attribute with the same method, this time select from list "Operator's notes"
5. Save changes in the weighing types table with the "Save" button
6. Add a weighing type to the scale. For this, select the desired scale on scales list (table on the left side), select the desired type on the types list (table on the right side) and press the "Add type to scale" button (green arrow between the tables). The new record should appear on the scales list.
7. Check the "Active" window, in order for our weighing type to be visible during weighing
8. Save the changes on the list by clicking on the "Save" button and close the weighing types window

After opening the weighing window for a selected scale, on the weighing types list there should be a new selectable "Steel Weighing" type. After selecting this type, the configured attributes should appear.

7.6 Measurement series

In this window you're able to manage all the executes measurement series

8. Custom weighing receipts

The X-Scale program lets you create any-looking scale receipt. The newly created receipt can be assigned to a specific product or set as default for the entire program.

The creation of a new receipt is separated into two stages:

- Stage 1: Creating a new receipt – look chapter 8.1
- Stage 2: Importing the created receipt – look chapter 8.2

8.1 Creating a custom weighing receipt

Creating a new weighing receipt:

1. In the program's settings go to the "Weighing receipt" tab, next "Custom weighing receipts"
2. Click on the "Reports editor" icon
3. Select the kind of the receipt – we can choose:
 - graphic default ticket – receipt for standard weighings for graphic printers
 - matrix default ticket – receipt for standard weighings for dot-matrix printers
4. Click on the "Edit selected report" button or Edit any file, if we have the reports template saved on disc
5. In the window, which appears, we can select the appearance of our weighing receipt – more in chapter 8.1.1

After you're done editing, you can save the receipt as the one we've edited or save it as a new receipt under any name with "Save As".

8.1.1 Modification of weighing receipts

The reports editing program gives us the possibility to place the information on the weighing receipt in any way we want, any information we want.

- [F_001_VALUE] Company name from the license field
- [F_002_VALUE] Company address from the license field
- [F_003_VALUE] ZIP code, city from the license field
- [F_004_VALUE] Phone from the license field
- [F_010_VALUE] Number of scale receipt
- [F_011_TEXT] Text „Print date“
- [F_011_VALUE] Print date
- [F_020_TEXT] Weighing attribute name no.1
- [F_020_VALUE] Attribute value. no.1
- [F_021_TEXT] Weighing attribute name no.2
- [F_021_VALUE] Attribute value. no.2
- [F_022_TEXT] Weighing attribute name no.3
- [F_022_VALUE] Attribute value. no.3
- [F_023_TEXT] Weighing attribute name no.4
- [F_023_VALUE] Attribute value. no.4
- [F_024_TEXT] Weighing attribute name no.5
- [F_024_VALUE] Attribute value. no.5
- [F_025_TEXT] Weighing attribute name no.6
- [F_025_VALUE] Attribute value. no.6
- [F_026_TEXT] Weighing attribute name no.7
- [F_026_TALUE] Attribute value. no.7
- [F_027_TEXT] Weighing attribute name no.8
- [F_027_VALUE] Attribute value. no.8
- [F_028_TEXT] Weighing attribute name no.9
- [F_028_VALUE] Attribute value. no.9
- [F_029_TEXT] Weighing attribute name no.10
- [F_029_VALUE] Attribute value. no.10
- [F_040_TEXT] Text „Gross“
- [F_040_VALUE] Gross Value
- [F_041_TEXT] Text „Tare“
- [F_041_VALUE] Tare Value
- [F_042_TEXT] Text “Net”
- [F_042_VALUE] Net Value
- [F_043_TEXT] Text „Weighing date“
- [F_043_VALUE] Weighing date
- [F_044_TEXT] Text „Tare from hand“
- [F_045_TEXT] Text „Alibi no.“
- [F_045_VALUE] Alibi Value
- [F_046_TEXT] Text „Operator“
- [F_046_VALUE] Name of the user executing the weighing
- [F_060_TEXT] Text „Mass value in meter memory“
- [F_070_VALUE] Text 1 footer line
- [F_070_VALUE] Text 2 footer line
- [F_070_VALUE] Text 3 footer line
- [F_070_VALUE] Text 4 footer line
- [LOGO_VALUE] Company logo

8.2 Importing created weighing receipts

In order to import the receipt we created earlier, you must:

1. Go to the program's settings/Weighing receipt/Custom weighing receipt
2. Press the "Load receipt" icon
3. Select from disc the newly created receipt
4. After a proper import, the program will inform you with a message "Weighing receipt was successfully imported"

9. Weighing windows

9.1 Weighing window with tare and zeroing options

In order to enable the tare or zeroing functions from the level of the X-Scale program, in the scale meter's configuration, you must check the correct options.

1. You must go into the Settings tab in the Management menu
2. Click on the Scale meter button, and proceed to the "Weighing" tab
3. Check the option "Enable tare function"
4. Check the option "Enable zeroing function"
5. Save settings with the "OK" button

If the meter doesn't support tare or zeroing options (from the program's level) – you won't be able to check these options in settings. In order to confirm whether the meter supports these options, you only have to look into the meter's tab and in the table, near the Tare and Zeroing parameters there should be a text saying "Yes" in the value field.

In order to tare the scale, simply click the "-T-" button on the weighing panel, if you'd like to remove the tare, you only have to (depending on the meter) click on the "-T-" button once more, or set the scale to "0"kg and press the tare button.

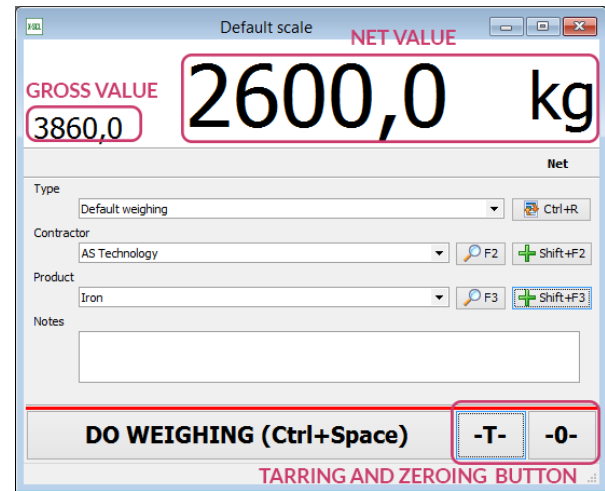


Fig. 34 Weighing window with tare and zeroing options

9.2 Weighing with the counting option

In order to activate the counting window, you must:

1. Go into the Settings tab in the Management menu
2. Click on the Scale meter button and proceed to the “Weighing” tab
3. Check the “Counting mode” option
4. Select the rounding method (up or down)

Weighing:

1. First you must place enough items on the scale for calibration
2. In the window, type in the correct quantity of the item, and click on the “Calibrate” button

Now if we add or take from the product’s quantity, at the top of the window, the number of items should change.

10. Help

In this tab, we have three categories:

- **About the program** – basic information about the X-Scale program will appear
- **User manual** – The user manual in a pdf-a form will appear
- **Online help** – after clicking on this icon, a built-in program for remote support will appear – after typing in the number, which appears on the screen of the newly opened program, quick remote help will be available.

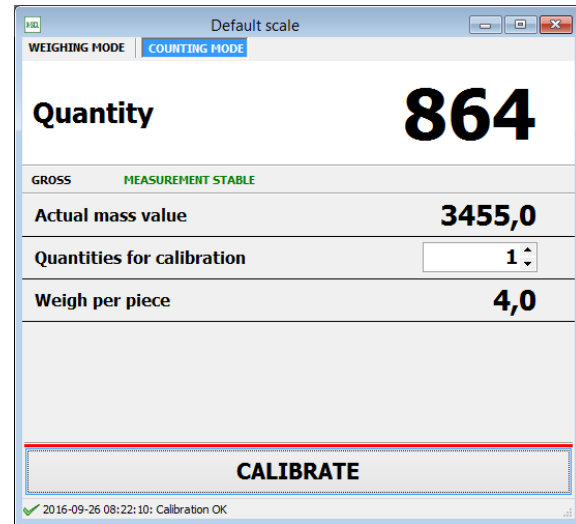


Fig. 35 Counting mode